

# ROYAL CARGO - ALL SOULS Regatta 2018

Friday NOV 2<sup>ND</sup> to Sunday NOV 4<sup>TH</sup> , 2018

Puerto Galera Yacht Club

Puerto Galera, Oriental Mindoro, Philippines

## SAILING INSTRUCTIONS

### 1 RULES

1.1 The regatta will be governed by the rules as defined in *The Racing Rules of Sailing*.

PGYC Handicap System as administered by the Race Committee. Ratings for boats without previously published ratings may be adjusted after Race 1 at the discretion of the race committee.

1.2 All races will be completed using a pursuit race format. The object of “Pursuit Racing” is that the theoretical slowest boat starts first and the fastest boats start last. In theory all boats should finish simultaneously. The winner is the first yacht to cross the finish line.

1.3 The Notice of Race (unless amended by the Sailing Instructions)

1.4 Rules as per these Sailing Instructions

1.5 The Racing Rules will be changed as indicated:

26. Starting Races - No starting signals will be given. Races will be run using a pursuit format. Each competitor will receive a start time for the day’s race no later than the skippers meeting at 0900 daily. The first start each day of the regatta will not be before 1000, subject to confirmation at the 0900 Daily Skipper’s briefing.

27.3 Before the Start Time each day, the race committee may for any reason postpone or abandon the race, via announcement at Skippers briefing and/or cell phone message to skipper.

29 Recalls - When at the prescribed start time for a boat, any part of her hull, crew or equipment is on the course side of the starting line, the vessel will incur a starting penalty.

30 Starting Penalties – If any boat breaks rule 29 and is identified, she shall receive without hearing, a penalty equivalent to double the time she was early crossing the line plus additional 10 minutes, added to her finish time.

31. Rule 44.1 is changed so that the Two-Turns Penalty is replaced by the One-Turn Penalty

61.2 Protest – (e) a protest fee shall be waived. The Protest Committee may apply a time penalty for any infraction of the rules.

**1.6** In case of conflict between any of the above, succeeding items take precedence. This changes RRS 63.7

## **2. NOTICES TO COMPETITORS**

Notices to competitors will be posted on the official notice board located at the PGYC clubhouse. Plus announced at the Daily Skipper's Briefing

## **3 CHANGES TO SAILING INSTRUCTIONS**

Any change to the sailing instructions will be posted before 0900 on the day it will take effect. Plus announced at The Daily Skipper's Briefing.

## **4 SCHEDULE OF RACES**

4.1 Friday 2<sup>nd</sup> Nov First Start Not before 1000  
Saturday 3<sup>rd</sup> Nov First Start Not before 1000  
Sunday 4<sup>th</sup> Nov First Start Not before 1000

## **5 RACING AREAS**

The racing area will be in the Verde Island Passage in the vicinity of Puerto Galera. See Addendum A. Sheet 4.

## **6 THE COURSES**

**6.1** The documents in Addendum A (attached) include:

1. Course Sheet.
2. A list of approximate coordinates of marks
3. A list of flags which may be used.
4. A chart with marks.

**6.2** The course to be sailed will be published on the Official Notice Board before 0900 each day and announced at The Daily Skippers Briefing.

**6.3** In the event of necessity to shorten course, a committee boat will be stationed and flying the S flag.

## **7 MARKS**

**7.1** The marks of the courses are orange buoys and islands as described in Addendum A.

**7.2** If a boat hits a mark they will promptly complete a 360 degree turn

## **8 THE START**

- 8.1** All races for the regatta follow a pursuit race format. Each competitor will be given a start time for each race based on his PGYC rating and the length of the course for the day.
- 8.2** Starting times will be posted no later than 0900 the day of the race.
- 8.3** The starting line will be between an orange flag at the end of Lanes Pier (N 13° 30.91' E 120° 57.08') at the Port end. And an orange buoy at the Starboard end.
- 8.4** Boats are racing from 4 minutes before their published start time. Therefore engines cannot be run in gear after this time. Please avoid the start line until this time.
- 8.5** At all times boats must use G.P.S. time for starting and finishing. The PGYC Committee Boat will record Start and Finish times.

## **9 THE FINISH**

- 9.1** The finishing line will be in the vicinity of Haligi Beach. (N 13° 31.2' E 120° 56.5')
- 9.2** The finish line will be between an inflatable orange buoy inshore at the Port end, and an orange flag on a Banca at the Starboard end. NB: Leave banca to Starboard.

## **10 TIME LIMITS**

- 10.1** The time limit for all races is 1700.
- 10.2** Boats failing to finish within the time limit will be scored the number of boats in their class plus 1 point. For the Overall Score they will be scored the number in the Regatta Fleet plus 1 point. This changes rules 35 and A4.
- 10.3** If a boat withdraws from a race there is no requirement to cross the finish line.

## **11 PROTESTS AND REQUESTS FOR REDRESS**

- 11.1** Protests shall be lodged at The PGYC office within the protest time limit.
- 11.2** For each class, the protest time limit is 1730 the day of the race
- 11.3** Notices will be posted within 5 minutes of the protest time limit to inform competitors of hearings in which they are parties or named as witnesses. Hearings will be held in the jury room, located at the PGYC clubhouse office beginning at 17.30.

## **12 SCORING**

- 12.1** Daily Results for PGYC Handicap System will be scored based on the order of finish.
- 12.2** A boats score will be the total of her race scores using the Low Point System

### **13 RADIO COMMUNICATION**

- 13.1** While racing a boat shall neither make nor receive radio communications not available to all participants.
- 13.2** As a safety precaution all boats are expected to monitor VHF channel 68 while racing. Because of poor VHF coverage in this area, participating yachts must supply the Race Committee with a cell phone number, to communicate messages such as Shortened Course or Abandon Race.

### **14 PRIZES**

- 14.1** Daily Prizes will be awarded at 1800 hours at the PGYC club house for the first three places in each class.
- 14.2** Class Winners and Overall trophies will be presented at the Awards Party on Sunday afternoon Nov. 4<sup>th</sup> at PGYC club house. Time will be announced at The Skippers briefing.
- 14.3** Other prizes may be awarded at the discretion of the organizing committee.

### **15 DISCLAIMER OF LIABILITY**

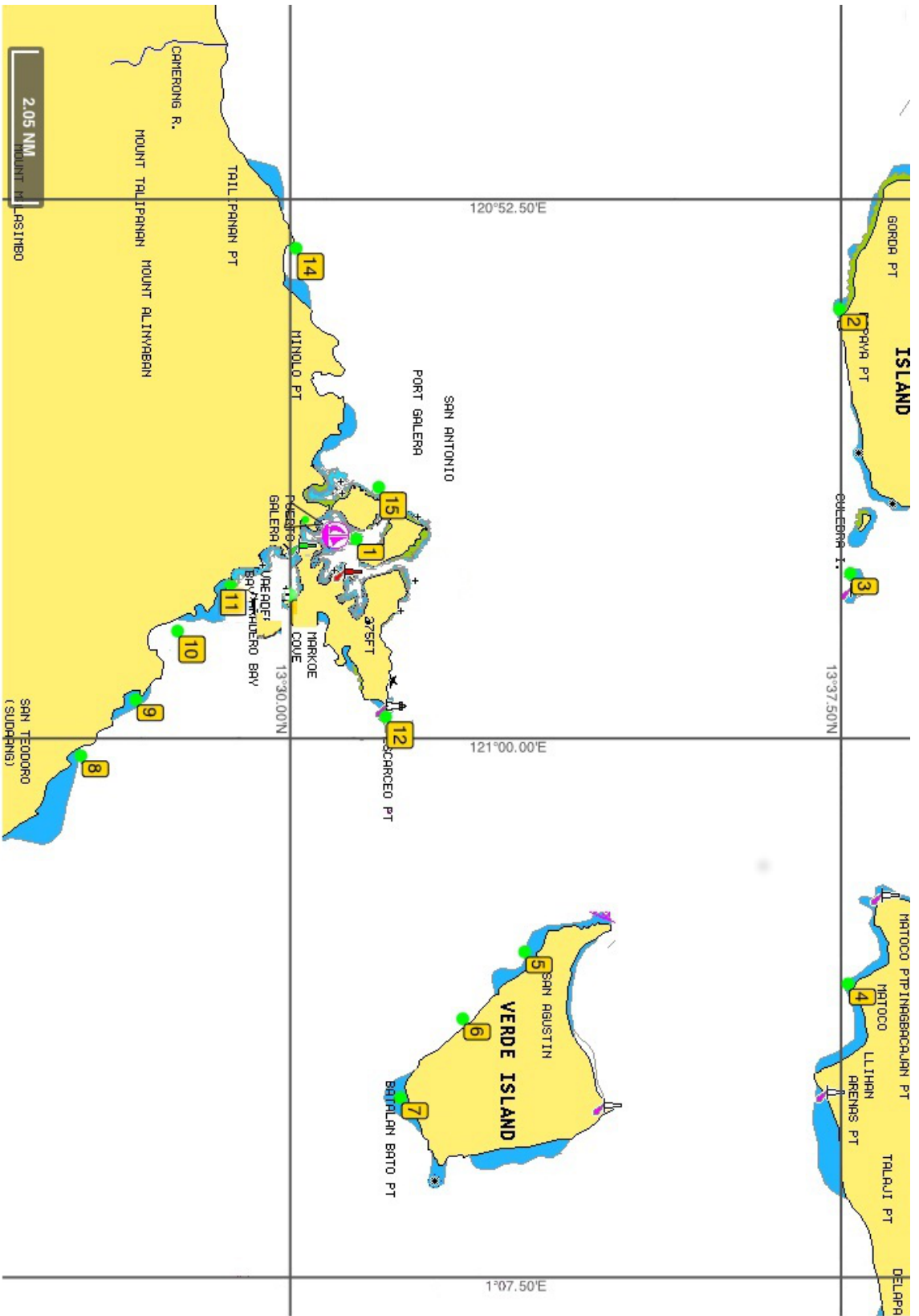
Competitors participate in the regatta entirely at their own risk. See rule 4, Decision to Race. The organizing authority will not accept any liability for material damage or personal injury or death sustained in conjunction with or prior to, during or after the regatta.

## ADDENDUM A SHEET 1 COURSE SHEET

Course	Mark	Mark	Mark	Mark	Mark	Mark	Mark	Dist
<b>RACING</b>								
1	Start	6. PORT	Chic Fth Port	Culebra Port	15. FINISH			25
2	Start	2. STBD	Chic Fth Port	Culebra Port	Chic Fth Port	Culebra Port	15. Finish	23
3	Start	2. STBD	4. STBD	15. FINISH				27
4	Start	7. STBD	10. STBD	15. FINISH				23
5	Start	7. STBD	8. STBD	10. STBD	15. FINISH			27
6	Start	8. STBD	10. STBD	15. FINISH				17
7	Start	Round Verde	15. FINISH					23
8	Start	14. STBD	5. STBD	15. FINISH				22
9	Start	Chic Fth Stbd	11. STBD	15. FINISH				23
10	Start	Chic Fth Port	Culebra Port	Chic Fth Port	Culebra Port	FINISH		21
11	Start	Chic Fth Port	Culebra Port	14. PORT	15. FINISH			23
12	Start	Chic Fth Port	Culebra Port	Chic Fth Port	Culebra Port	14. PORT	15. Finish	26
13	Start	7. PORT	Chic Fth Port	15. Finish				25
<b>CRUISING &amp; MULTI</b>								
14	Start	2. STBD	3. STBD	15. FINISH				18
15	Start	3. PORT	2. PORT	15. FINISH				18
16	Start	5. PORT	4. PORT	15. FINISH				22
17	Start	7. STBD	15. FINISH					18
18	Start	4. PORT	3. PORT	15. FINISH				22
19	Start	11. PORT	15. FINISH					14
20	Start	Chic Fth Port	Culebra Port	15. FINISH				16
21	Start	Culebra STBD	ChicFth Stbd	15. FINISH				16
22	Start	6. PORT	15. FINISH					16
23	Start	7. PORT	15. FINISH					18
<b>COMBINED FLEET</b>								
24	Start	11. STBD	15. FINISH					14
25	Start	10. PORT	15. FINISH					16
26	Start	10. STBD	15. FINISH					16
27	Start	9. STBD	15. FINISH					16
28	Start	8. STBD	15. FINISH					17

**SHEET 2**  
**APPROXIMATE CO-ORDINATES OF MARKS**

<b>MARK #</b>	<b>NAME</b>	<b>ISLAND</b>	<b>GPS (N)</b>	<b>GPS (E)</b>	<b>DEPTH</b>	<b>COMMENT</b>
1	START	LANES PIER	13 30.90	120 57.2	20	LANES PIER TO PORT & ORANGE BOUY TO STBD
2	PAPAYA POINT	MARICABAN	13 37.50	120 54.0	18	
3	MARK 3		13 37.62	120 57.7	20	SOUTH OF CHICKEN FEATHER
4	PINAGACAJAN Pt	LUZON	13 37.60	121 03.4	16	SOUTH OF RED & WHITE TOWER
5	VERDE 1	VERDE	13 33.20	121 02.9	16	San AUGUSTIN
6	VERDE 2	VERDE	13 32.35	121 03.9	15	OLD MARK
7	VERDE 3	VERDE	13 31.50	121 05.0	15	VERDI SOUTH - SAWONG
8	SAN TEODORO	MINDORO	13 27.15	121 00.2	15	STANSBURY BEACH
9	BULABOD	MINDORO	13 27.90	120 59.5	19	OLD MARK
10	OCEANA RESORT	MINDORO	13 28.46	120 58.5	12	IN FRONT OF OCEANA RESORT
11	SMALL TABINAY	MINDORO	13 29.40	120 57.8	18	IN FRONT OF SQUARES RESORT
12	ESCARCEO POINT	MINDORO	13 31.30	120 59.7	30	NEAR SABANG LIGHTHOUSE
14	TALIPANAN	MINDORO	13 30.08	120 53.2	20	LUCAS RESTAURANT ASHORE
15	FINISH BOAT	HALIGI BEACH	13 31.20	120 56.5	10	ORANGE MARK INSHORE AT PORT END & FINISH BANCA TO STBD



Sheet 4

**SHEET 3**  
**FLAGS POSSIBLY USED DURING THE REGATTA.**

- Class Flags

White – Racing

Yellow – Cruising

Pink – Multihull

- Flag Sheet



AP – Delayed start. Racing commences 6 min after dousing



N – Abandon Race



M – Replaces lost or stolen mark



S – Shorten course here. Committee boat will record time



C – Proceed straight to finish, ignore other marks. Time will be recorded at finish line